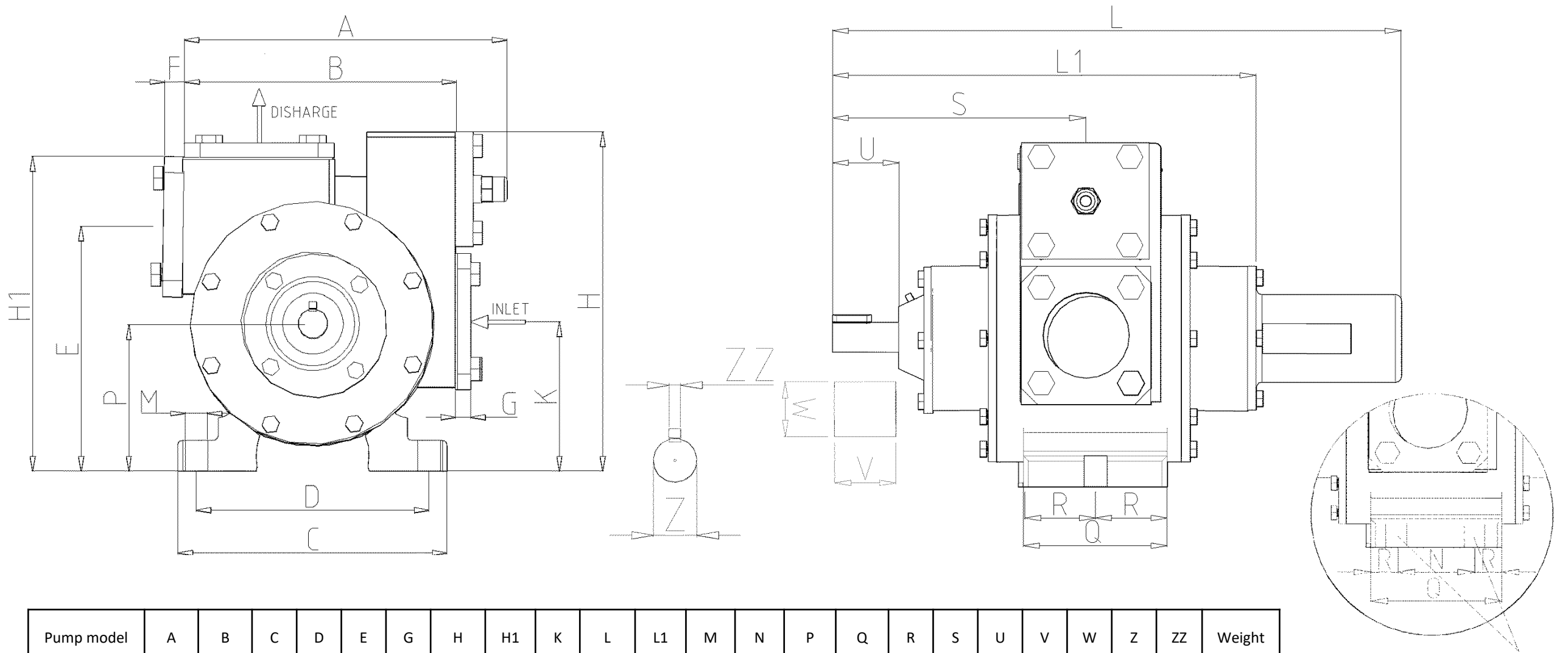


DIMENSIONS

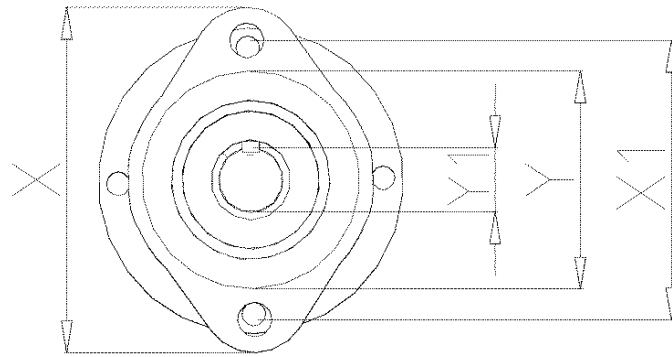
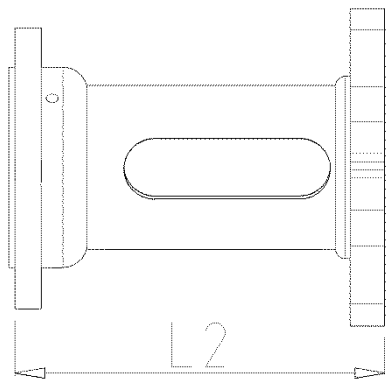
SAC2, SAC2.5, SAC3



The SAC3 model has 4holes for mounting

Pump model		A	B	C	D	E	G	H	H1	K	L	L1	M	N	P	Q	R	S	U	V	W	Z	ZZ	Weight
SAC2	mm	255	198	189	168	171	10	225	218	96	461	381	16	-	103	89	45	223	65	50	48	28	4	36.5kg
	inch	10	7.8	7.44	6.61	6.73	0.39	8.86	8.58	3.74	18.15	15	0.62	-	4.05	3.50	1.77	8.78	2.56	1.97	1.89	1.10	0.15	80lbs
SAC2.5	mm	290	213	205	184	187	12	258	244	106	491	409	16	-	111,2	111	57.5	238	67	50	48	30	4	51.5kg
	inch	11.47	8.38	8.07	7.24	7.36	0.47	10.15	9.6	4.17	19.33	16.10	0.62	-	4.38	4.37	2.26	9.37	2.63	1.97	1.89	1.18	0.15	112lbs
SAC3	mm	326	262	244	214	-	15	326	301	125	524	433	14	100	141	126	14	255	75	50	51	35	5	81kg
	inch	12.83	10.31	9.6	8.42	-	0.59	12.83	11.85	4.92	20.63	17.05	0.55	3.93	5.55	4.96	0.55	10	2.95	1.97	2	1.37	0.19	178.5lbs

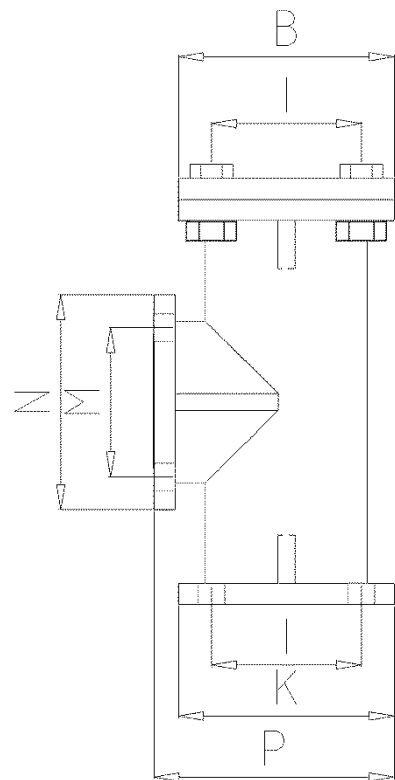
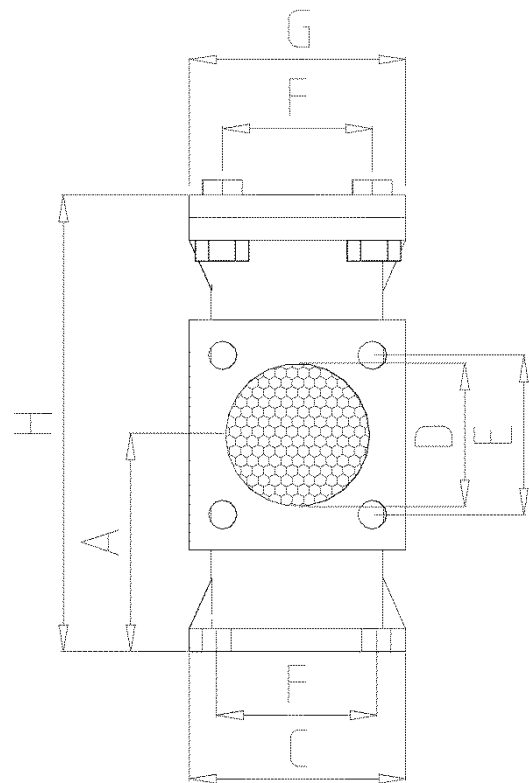
G is the width of the weld flange, for NPT flange the width is 22mm(SAC2-2.5)- 25mm(SAC3) and for BSP is 35mm(SAC2)- 42(SAC2.5)- 44mm(SAC3)



Hydraulic adaptor

In order to measure the total length of the pump + adaptor use the following: $L1 - (U+26) + L2$.
 In case of double end shaft use $L - (U+26) + L2$.

Pump model		L2	X	X1	Y	Y1
SAC2	mm	153	130	106	82.65	25
	inch	6	5.19	4.17	3.25	0.98
SAC2.5	mm	153	130	106	82.65	25
	inch	6	5.19	4.17	3.25	0.98
SAC3	mm	161	130	106	82.65	25
	inch	6.34	5.19	4.17	3.25	0.98



T-filter

Pump model		A	B	C	D	E	F	G	H	I	K	M	N	P
SAC2	mm	89	92	92	52	65	65	92	190	65	92	65	92	111
	inch	3.5	3.62	3.62	2	2.56	2.56	3.62	7.48	2.56	3.62	2.56	3.62	4.37
SAC2.5	mm	101	114	108	63	78	78	108	215	78	114	78	114	133
	inch	3.97	4.49	4.25	2.48	3.07	3.07	4.25	8.46	3.07	4.49	3.07	4.49	5.23
SAC3	mm	104	134	130	82	102	102	130	223	102	134	102	134	146
	inch	4.1	5.27	5.12	3.23	4	4	5.12	8.78	4	5.27	4	5.27	5.75