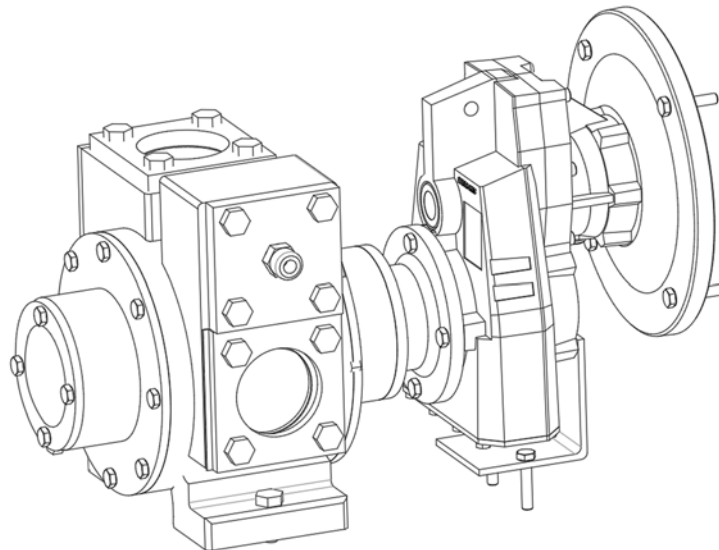




# EMHKAM

PUMPS

**SLIDING VANE PUMPS**  
**GH series**  
**INSTRUCTIONS FOR INSTALLATION**



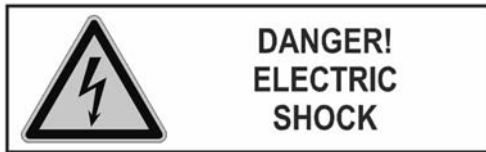
**MARKIDIS P. & Co G.P.**

Sindos Industrial Area, Block 39 A, P.C. 570 22, Thessaloniki, Greece

Tel: (+302310) 79 78 33, Fax: (+302310) 79 79 65

e-mail: [contact@emikam.com](mailto:contact@emikam.com) , web: [www.emikam.gr](http://www.emikam.gr)

Instructions for installation



Always disconnect the electrical power supply before performing any maintenance, in order to avoid risks of electric shock, fire or even death.



If pumping hazardous or toxic fluids, the system must be flushed prior to performing service.



Operation without guards in place can cause serious personal injury, major property damage, or death.



Disconnecting fluid or pressure containment components during pump operation can cause serious personal injury, death or major property damage.



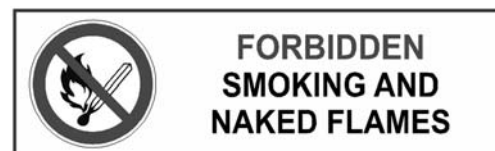
Failure to relief system pressure prior to performing pump service or maintenance can cause personal injury or property damage.



Failure to disconnect electrical power or engine drive before attempting maintenance can cause severe personal injury or death.



High temperature in the pump can cause ignition in gases and dust.



In hazardous areas smoking and existence of naked flame are prohibited.



Use proper equipment for explosive atmosphere.



Contact with hot surfaces can cause serious burn.



Grease oil and lubricants can pollute the environment.



Follow the instructions of the manual in order to avoid risks of severe personal injury or death.

## **1. INSTALLATION**

In order to install the assembly, make sure that screwing the bases of both pump and gear box will not affect the alignment.

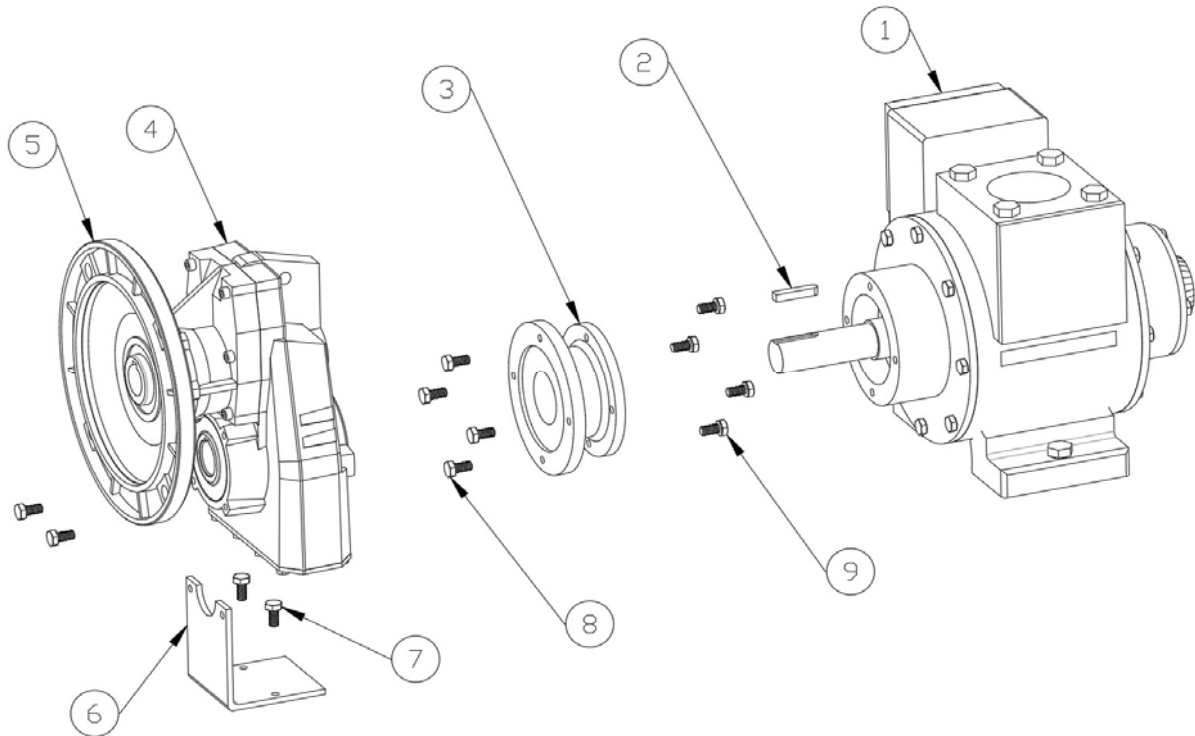
In order to replace the pump or the speed reducer, follow the instructions below:

1. Remove screws nr.8 for gear box replacement or nr.9 for pump replacement.
2. Remove screws nr.7 for gear box replacement
3. Replace the requested part and follow the reverse procedure to secure the part.

For more detailed information about the main parts of the assembly (pump, gear box), refer to their instruction manuals.

Instructions for installation

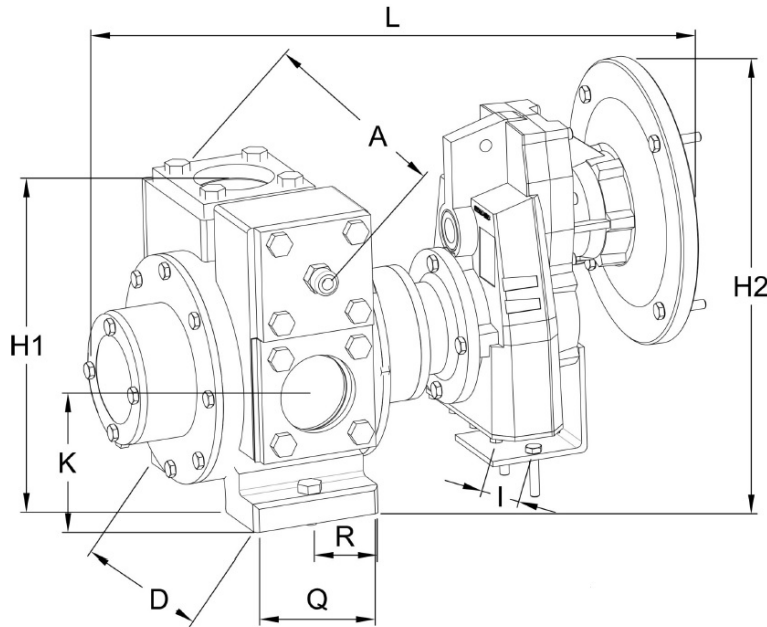
2. PART LIST



No	DESCRIPTION	PIECES	CODE
1	Pump GMD2 Pump GMD2.5 Pump GMD3 Pump SAC2 Pump SAC2.5 Pump SAC3 Pump SLD2 Pump SLD2.5 Pump SLD3 Pump GSL2 Pump GSL2.5 Pump GSL3	1	
2	Shaft key 8×7×40 Steel st37 Shaft key 10×8×50 Steel st37	1	
3	Adaptor 2inch Adaptor 2.5inch Adaptor 3inch	1	
4	Gear box FA41 Gear box FC61	1	
5	Gear box flange IEC90B5 Gear box flange IEC112B5 Gear box flange IEC132B5	1	
6	Gear box base	1	
7	Hex screw M8x30 Hex screw M10x30	4	
8	Hex screw M8x35 Hex screw M10x35	4	
9	Hex screw M8x25 Hex screw M10x25	4	

Picture 1: Spare parts list of GH series Sliding vane pumps

**3. DIMENSIONS**



Pump size		2"	2.5"	3"
A	mm	257	277	330
	inch	10,11	10,9	12,99
D	mm	167	182	220
	inch	6,57	7,16	8,66
H1	mm	221	248	303
	inch	8,7	9,76	11,93
H2	mm	289	320	393
	inch	11,38	12,6	15,47
L	mm	514,5	551,5	633
	inch	20,25	21,7	24,9
I	mm	46	46	46
	inch	1,81	1,81	1,81
Q	mm	93	115	130
	inch	3,66	4,52	5,11
R	mm	46	57,5	14
	inch	1,81	2,26	0,55
weight*	Kg	52	57,5	14
	lbs	1,81	2,26	0,55

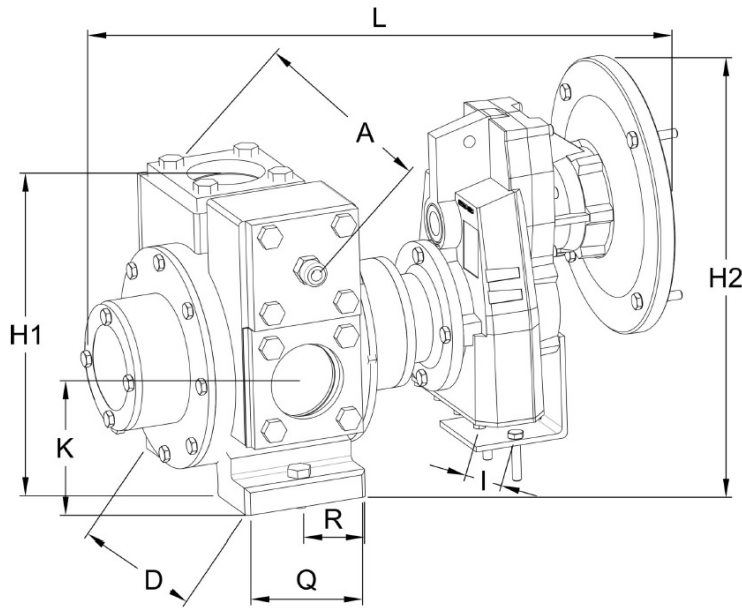
**Picture 2:** Dimensions list of GH-GMD

Speed reducer input flange for standard models GH-GMD2 is IEC90B5, for GH-GMD2.5 IEC112B5 and for GH-GMD3 IEC132B5.

For more dimensional information please refer to pump's and speed reducer's dimensional drawing.

\*The weight of the assembly is approximate.

**Instructions for installation**



Pump size		2"	2.5"	3"
A	mm	257	277	330
	inch	10,11	10,9	12,99
D	mm	167	182	220
	inch	6,57	7,16	8,66
H1	mm	221	248	303
	inch	8,7	9,76	11,93
H2	mm	289	320	393
	inch	11,38	12,6	15,47
L	mm	514,5	551,5	633
	inch	20,25	21,7	24,9
I	mm	46	46	46
	inch	1,81	1,81	1,81
Q	mm	93	115	130
	inch	3,66	4,52	5,11
R	mm	46	57,5	14
	inch	1,81	2,26	0,55
weight*	Kg	52	57,5	14
	lbs	1,81	2,26	0,55

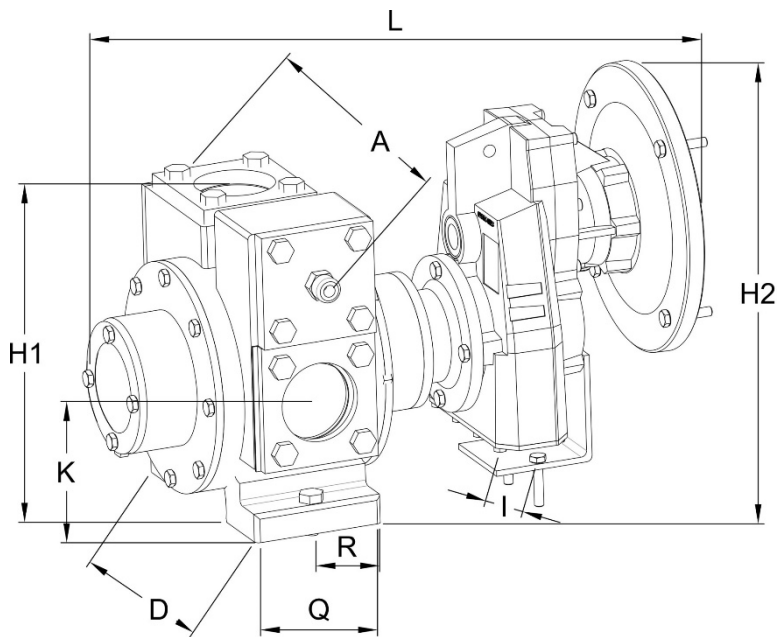
**Picture 3:** Dimensions list of GH-GSL

Speed reducer input flange for standard models GH-GSL2 is IEC90B5, for GH-GSL2.5 IEC112B5 and for GH-GSL3 IEC132B5.

For more dimensional information please refer to pump's and speed reducer's dimensional drawing.

\*The weight of the assembly is approximate.

**Instructions for installation**



Pump size		2"	2.5"	3"
A	mm	255	290	326
	inch	10	11,47	12,83
D	mm	167	179	214
	inch	6,57	7,04	8,42
H1	mm	219	244	301
	inch	8,62	9,6	11,85
H2	mm	288	318	391
	inch	11,34	12,5	15,4
L	mm	514,5	551,5	633
	inch	20,25	21,7	24,9
I	mm	46	46	46
	inch	1,81	1,81	1,81
Q	mm	91	112	126
	inch	3,58	4,4	4,96
R	mm	45	57,5	14
	inch	1,77	2,26	0,55
weight*	Kg	52	57,5	14
	lbs	1,81	2,26	0,55

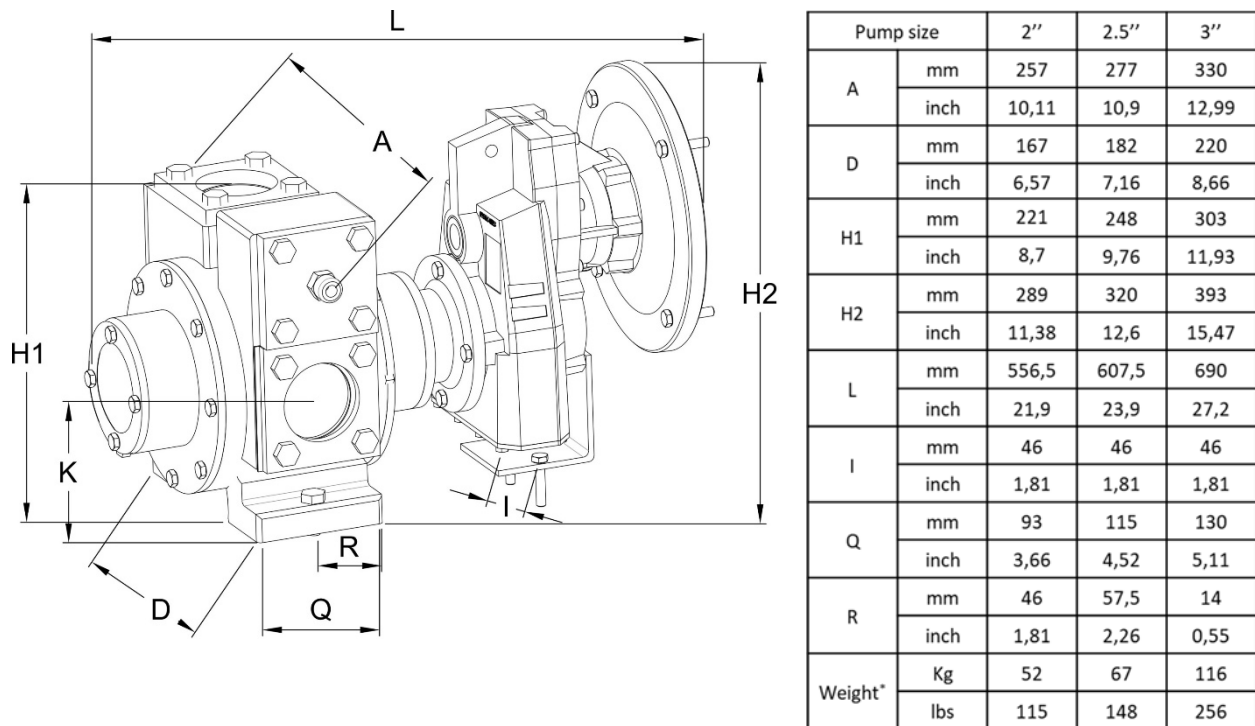
**Picture 4:** Dimensions list of GH-SAC

Speed reducer input flange for standard models GH-SAC2 is IEC90B5, for GH-SAC2.5 IEC112B5 and for GH-SAC3 IEC132B5.

For more dimensional information please refer to pump's and speed reducer's dimensional drawing.

\*The weight of the assembly is approximate.

**Instructions for installation**



**Picture 5:** Dimensions list of GH-SLD

Speed reducer input flange for standard models GH-SLD2 is IEC90B5, for GH-SLD2.5 IEC112B5 and for GH-SLD3 IEC132B5.

For more dimensional information please refer to pump's and speed reducer's dimensional drawing.

\*The weight of the assembly is approximate.



© Copyright EMHKAM, 2019.  
All rights reserved.

Copying, even in parts, is permitted only with the approval of company EMHKAM.