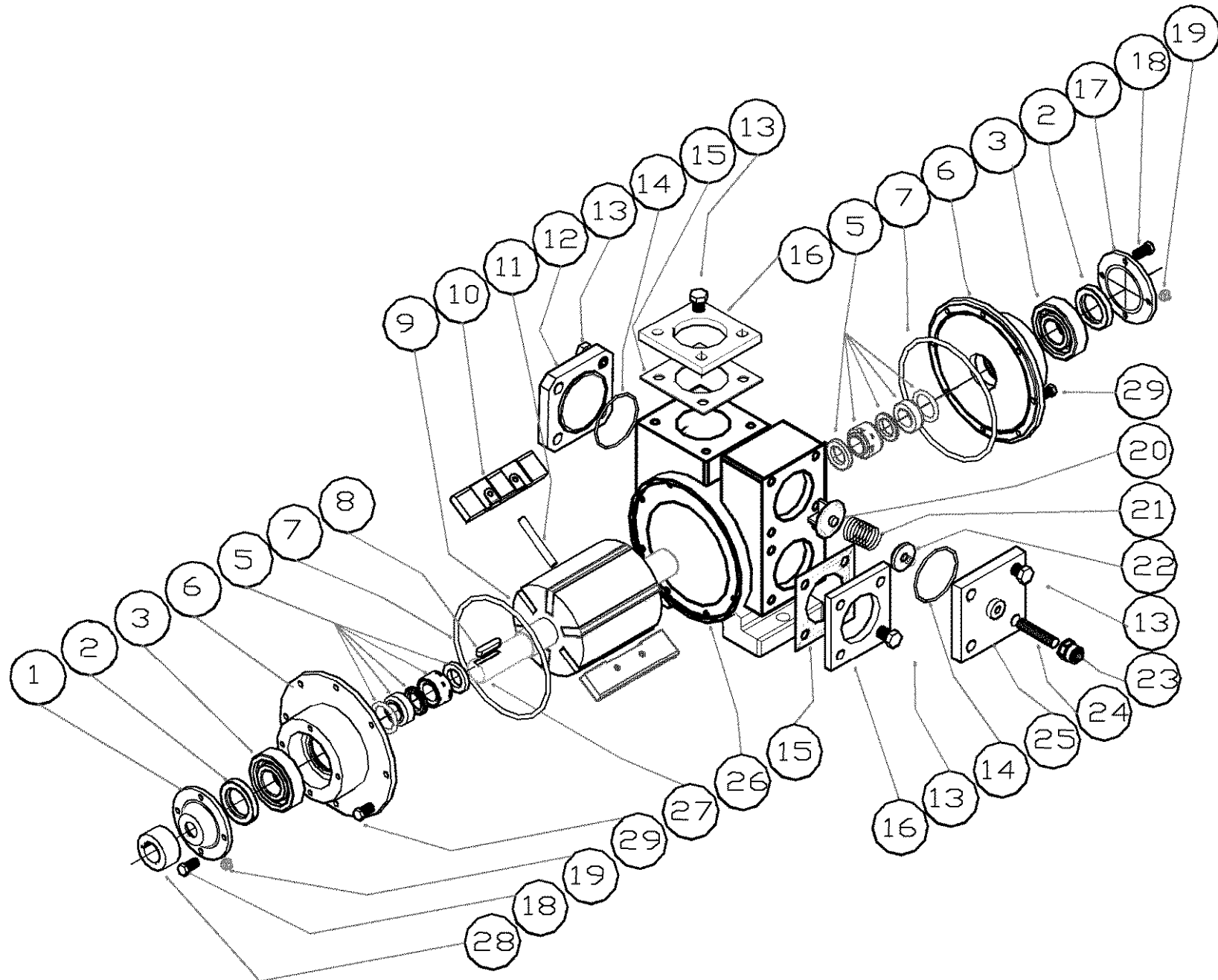


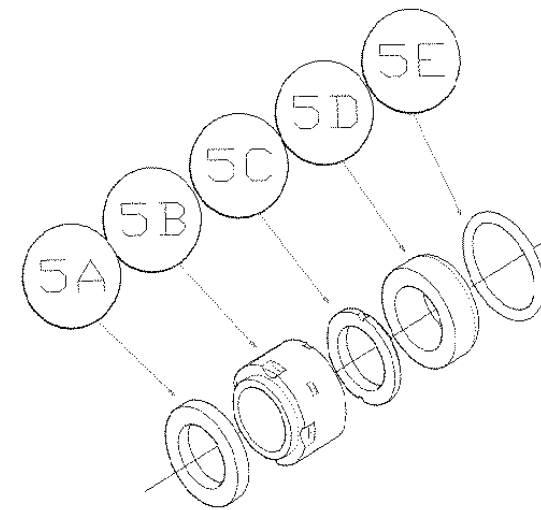
# PART LIST

## GMD2, GMD2.5, GMD3

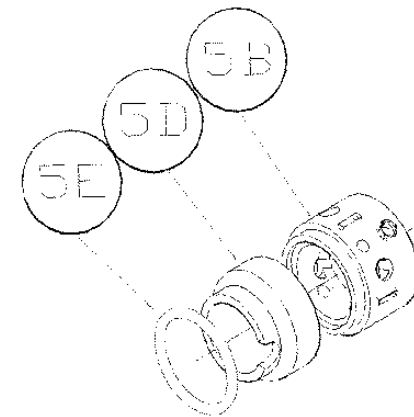


# GMD3

No	DESCRIPTION	PIECES	CODE
1	Bearing cover(open) Aluminum	1	7.0051
2	Rotary lip seal 40x55x8 NBR	2	4.0006
3	Ball bearing 6308	2	5.0003
5 <sup>4,5</sup>	Mechanical seal 502 Mechanical seal 59U	2	4.0016 4.0064
6	Head GG25 Head GGG50	2	7.0028 7.0088
7	O-ring 221x215x3 FKM O-ring 221x215x3 FEP	2	4.0043 4.0044
8	Shaft key 10x8x50 Steel st37 Shaft key 10x8x50 SS316	1	9.0062 9.0063
9	Rotor GG25 Rotor GGG50	1	1.0009 1.0010
10	Vanes TECAPET Vanes VOLTIS Vanes PTFE	6	8.0008 8.0007 8.0009
11	Push rod Ø8 SS304	3	10.0036
12 <sup>6</sup>	Two-way outlet cover GG25-GGG50	1	-
13	Hex screw M12x30	12	9.0023
14	O-ring 100x94x3 FKM O-ring 100x94x3 FEP	1	4.0040 4.0041
15	Flange Gasket Rubber cork Flange Gasket Teflon	2	6.0012 6.0015
16 <sup>2,3</sup>	Flange weld	2	6.0011
17 <sup>1</sup>	Bearing cover(closed) Aluminum	1	7.0063
18	Hex screw M8x16	4	9.0005
19	Greaser M6	2	9.0045
20	By-Pass Valve GG25 By-Pass Valve GGG50 By-Pass Valve SS316	1	3.0009 3.0010 3.0012
21	Spring C80 Spring SS316 Spring C80 Plated	1	22.0001 22.0009 22.0002
22	Spring guide Steel st37 Spring guide SS316	1	22.0007 22.0013
23	By-Pass Valve nut M28 Brass By-Pass Valve nut M28 SS316	1	3.0031 3.0033
24	Screw M14x80 Screw M14x80 SS316	1	9.0269 9.0270
25	By-Pass Valve cover GG25 By-Pass Valve cover GGG50	1	7.0040 7.0108
26	Pump body GG25 Pump body GGG50	1	7.0007 7.0091
27	Shaft single end 42CrMo4 Shaft single end SS316 Shaft double end 42CrMo4 Shaft double end SS316	1	10.0007 10.0009 10.0063 10.0065
28	Coupling Steel st37 Coupling SS316	1	10.0043 10.0045
29	Hex screw M10x40	20	9.0017



<sup>4</sup>Type 502 mechanical seal EN 12756



<sup>5</sup>Type 59U mechanical seal EN 12756

No	DESCRIPTION	PIECES	CODE
5A	Intermediate washer	1	4.0064(59U)GMD3 4.0063(59U)GMD2.5 4.0017(59U)GMD2 4.0016(502)GMD3 4.0015(502)GMD2.5 4.0014(502)GMD2
5B	Secondary seal	1	
5C	Rotating ring	1	
5D	Stationary ring	1	
5E	O-ring	1	

<sup>6</sup>For GMD3 model there is no two-way outlet ability therefore part nr 12 must be removed along with the corresponding o-ring and hex screw .

## GMD2.5

No	DESCRIPTION	PIECES	CODE
1	Bearing cover(open) Aluminum	1	7.0050
2	Rotary lip seal 35x45x7 NBR	2	4.0009
3	Ball bearing 6307	2	5.0002
5 <sup>4,5</sup>	Mechanical seal 502	2	4.0015
	Mechanical seal 59U		4.0063
6	Head GG25	2	7.0025
	Head GGG50		7.0087
7	O-ring 168x162x3 FKM	2	4.0034
	O-ring 168x162x3 FEP		4.0035
8	Shaft key 8x7x40 Steel st37	1	9.0060
	Shaft key 8x7x40 SS316		9.0061
9	Rotor GG25	1	1.0005
	Rotor GGG50		1.0006
10	Vanes TECAPET	6	8.0005
	Vanes VOLTIS		8.0004
	Vanes PTFE		8.0006
11	Push rod Ø8	3	10.0035
12	Two-way outlet cover GG25	1	7.0046
	Two-way outlet cover GGG50		7.0097
13	Hex screw M12x30	16	9.0023
14	O-ring 85x79x3 FKM	2	4.0037
	O-ring 85x79x3 FEP		4.0038
15	Flange Gasket Rubber Cork	2	6.0007
	Flange Gasket Teflon		6.0010
16 <sup>2,3</sup>	Flange weld	2	6.0006
17 <sup>1</sup>	Bearing cover(closed) Aluminum	1	7.0062
18	Hex screw M8x16	8	9.0005
19	Greaser M6	2	9.0045
20	By-Pass Valve Cast iron GG25	1	3.0001
	By-Pass Valve GGG50		3.0002
	By-Pass Valve SS316		3.0004
21	Spring C80	1	22.0004
	Spring SS316		22.0011
	Spring C80 Plated		22.0005
22	Spring guide Steel st37	1	22.0008
	Spring guide SS316		22.0015
23	By-Pass Valve nut M22 Brass	1	3.0025
	By-Pass Valve nut M22 SS316		3.0027
24	Allen screw M12x60	1	9.0032
	Allen screw M12x60 SS316		9.0033
25	By-Pass Valve cover GG25	1	7.0037
	By-Pass Valve cover GGG50		7.0107
26	Pump body GG25	1	7.0004
	Pump body GGG50		7.0090
27	Shaft Single end 42CrMo4	1	10.0004
	Shaft Single end SS316		10.0006
	Shaft double end 42CrMo4		10.0060
	Shaft double end SS316		10.0062
28	Coupling Steel st37	1	10.0040
	Coupling SS316		10.0042
29	Hex screw M8x30	16	9.0011

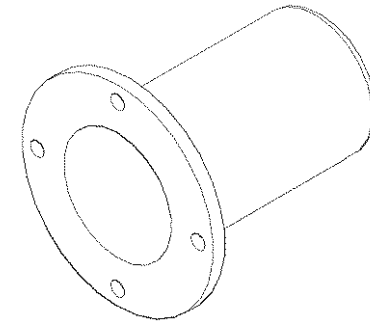
## GMD2

No	DESCRIPTION	PIECES	CODE
1	Bearing cover(open) Aluminum	1	7.0049
2	Rotary lip seal 30x45x7NBR	2	4.0001
3	Ball bearing 6206	2	5.0001
5 <sup>4,5</sup>	Mechanical seal 502	2	4.0014
	Mechanical seal 59U		4.0017
6	Head GG25	2	7.0022
	Head GGG50		7.0086
7	O-ring 151x145x3 FKM	2	4.0028
	O-ring 151x145x3 FEP		4.0029
8	Shaft key 8x7x40 Steel st37	1	9.0060
	Shaft key 8x7x40 SS316		9.0061
9	Rotor GG25	1	1.0001
	Rotor GGG50		1.0002
10	Vanes TECAPET	6	8.0002
	Vanes VOLTIS		8.0001
	Vanes PTFE		8.0003
11	Push rod Ø8	3	10.0034
12	Two-way outlet cover GG25	1	7.0043
	Two-way outlet cover GGG50		7.0096
13	Hex screw M10x30	16	9.0015
14	O-ring 70x64x3 FKM	2	4.0031
	O-ring 70x64x3 FEP		4.0032
15	Flange Gasket Rubber Cork	2	6.0002
	Flange Gasket Teflon		6.0005
16 <sup>2,3</sup>	Flange weld	2	6.0001
17 <sup>1</sup>	Bearing cover(closed) Aluminum	1	7.0061
18	Hex screw M8x16	8	9.0005
19	Greaser M6	2	9.0045
20	By-Pass Valve Cast iron GG25	1	3.0001
	By-Pass Valve GGG50		3.0002
	By-Pass Valve SS316		3.0004
21	Spring C80	1	22.0004
	Spring SS316		22.0011
	Spring C80 Plated		22.0005
22	Spring guide Steel st37	1	22.0008
	Spring guide SS316		22.0015
23	By-Pass Valve nut M22 Brass	1	3.0025
	By-Pass Valve nut M22 SS316		3.0027
24	Allen screw M12x60	1	9.0032
	Allen screw M12x60 SS316		9.0033
25	By-Pass Valve cover GG25	1	7.0034
	By-Pass Valve cover GGG50		7.0106
26	Pump body GG25	1	7.0001
	Pump body GGG50		7.0089
27	Shaft Single end 42CrMo4	1	10.0001
	Shaft Single end SS316		10.0003
	Shaft double end 42CrMo4		10.0057
	Shaft double end SS316		10.0059
28	Coupling Steel st37	1	10.0037
	Coupling SS316		10.0039
29	Hex screw M8x30	12	9.0011

No	DESCRIPTION	PIECES	CODE
30 <sup>1</sup>	Shaft cover (GMD3)	1	10.0068
	Shaft cover (GMD2.5)		10.0067
	Shaft cover (GMD2)		10.0066



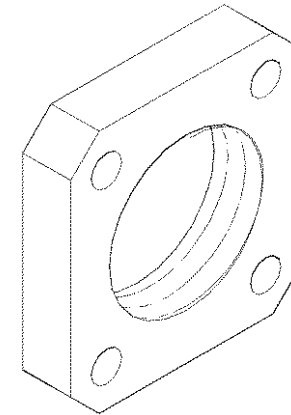
<sup>1</sup>For double end shaft model replace nr17part with shaft cover part nr30



No	DESCRIPTION	PIECES	CODE
31 <sup>2</sup>	Flange NPT (GMD3)	2	6.0040
	Flange NPT (GMD2.5)		6.0037
	Flange NPT (GMD2)		6.0034



<sup>2</sup>For NPT flange connection replace nr16 part with NPT flange part nr31



No	DESCRIPTION	PIECES	CODE
32 <sup>3</sup>	Flange BSPP (GMD3)	2	6.0049
	Flange BSPP (GMD2.5)		6.0046
	Flange BSPP (GMD2)		6.0043



<sup>3</sup>For BSPP flange connection replace nr16 part with BSPP flange part nr32

