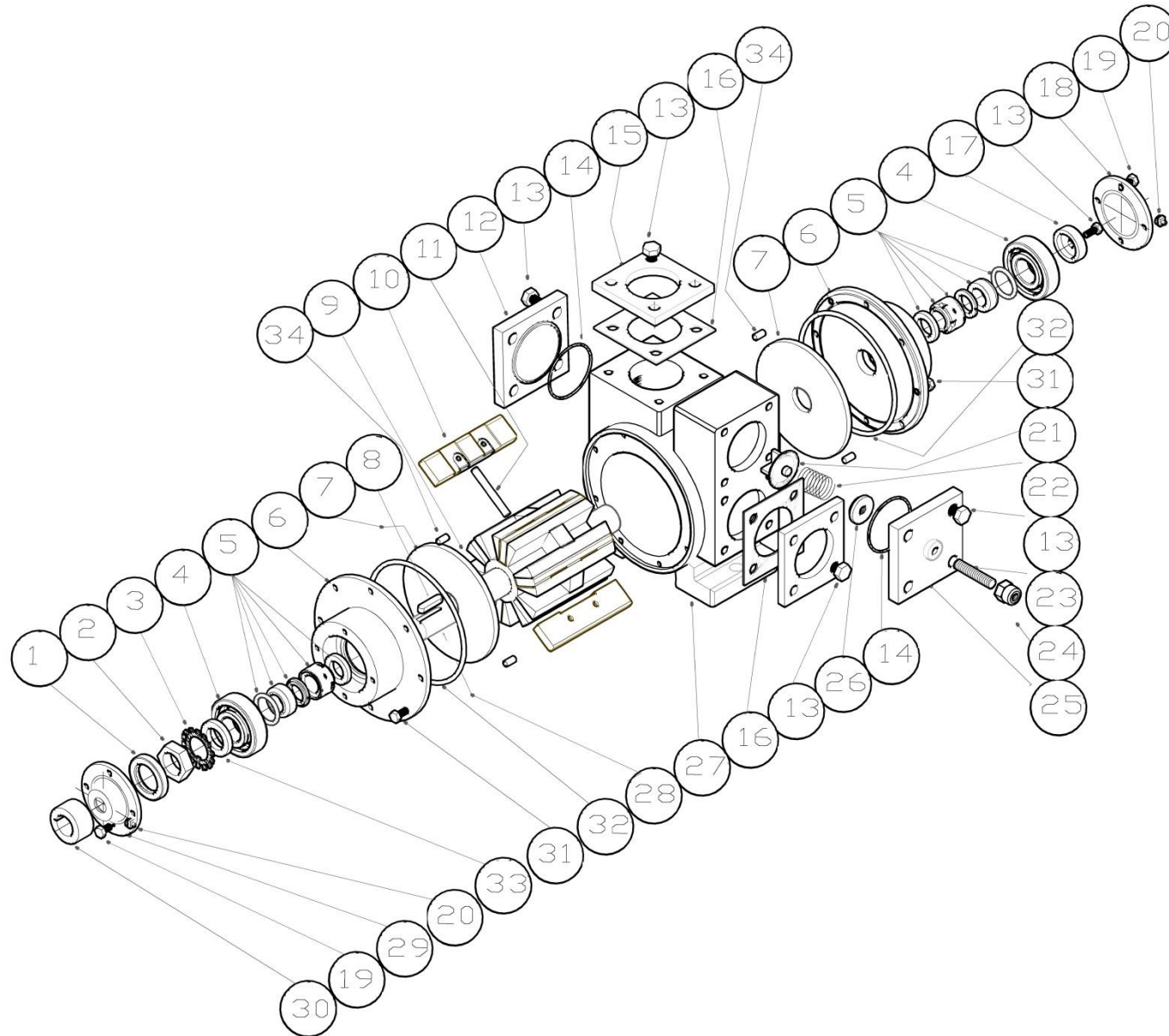


# PART LIST

## GSL2, GSL2.5, GSL3



## GSL3

No	DESCRIPTION	PIECES	CODE
1	Rotary lip seal 35x55x8 NBR	2	4.0004
2	Shaft nut Steel st37	1	9.0334
3	Retaining ring Self Locking Steel st37	1	9.0337
4	Ball bearing 6308	2	5.0003
5 <sup>4,5</sup>	Mechanical seal 502 Mechanical seal 59U	2	4.0016 4.0064
6	Head GS52-3	2	7.0193
7	Disk Carbon	2	6.0056
8	Shaft key 10x8x50 Steel st37 Shaft key 10x8x50 SS316	1	9.0062 9.0063
9	Rotor GGG50	1	1.0015
10	Vanes TECAPET	6	8.0008
11	Push rod Ø8 SS316	3	10.0036
12 <sup>6</sup>	-	1	-
13	Hex screw M12x30	16	9.0023
14	O-ring 100x94x3 FKM O-ring 100x94x3 FEP	1	4.0040 4.0041
15 <sup>2,3</sup>	Flange weld	2	6.0011
16	Flange Gasket Teflon Flange Gasket Rubber Cork	2	6.0015 6.0012
17	Support ring Steel st37	1	9.0340
18 <sup>1</sup>	Bearing cover (closed) GS52-3	1	7.0199

## GSL3

No	DESCRIPTION	PIECES	CODE
19	Hex screw M8x16	8	9.0005
20	Greaser M6	2	9.0045
21	By-Pass Valve GGG50 By-Pass Valve GG25 By-Pass Valve SS316	1	3.0010 3.0009 3.0012
22	Spring C80 Spring SS316 Spring C80 Plated	1	22.0001 22.0009 22.0002
23	Screw M14x80 Screw M14x80 SS316	1	9.0269 9.0270
24	By-Pass Valve nut M28 Brass By-Pass Valve nut M28 SS316	1	3.0031 3.0033
25	By-Pass Valve cover GS52-3	1	7.0202
26	Spring guide Steel st37 Spring guide SS316	1	22.0007 22.0013
27	Pump body GS52-3	1	7.0190
28	Shaft single end 42CrMo4 Shaft single end SS316 Shaft double end 42CrMo4 Shaft double end SS316	1	10.0007 10.0009 10.0063 10.0065
29	Bearing cover (open) GS52-3	1	7.0196
30	Coupling Steel st37 Coupling SS316	1	10.0043 10.0045
31	Hex screw M10x40	20	9.0017
32	O-ring 221x215x3 FKM O-ring 221x215x3 FEP	2	4.0043 4.0044
33	Intermediate Washer 55x39x3 St37	1	9.0343
34	Locating pin Steel st37	4	9.0345

<sup>6</sup>For GSL3 model there is no two-way outlet ability therefore part nr 12 must be removed along with the corresponding o-ring and hex screws.

## GSL2.5

No	DESCRIPTION	PIECES	CODE
1	Rotary lip seal 30x45x7 NBR	2	4.0001
2	Shaft nut Steel st37	1	9.0333
3	Retaining ring Self Locking Steel st37	1	9.0336
4	Ball bearing 6307	2	5.0002
5 <sup>4,5</sup>	Mechanical seal 502 Mechanical seal 59U	2	4.0015 4.0063
6	Head GS52-3	2	7.0192
7	Disk Carbon	2	6.0055
8	Shaft key 8x7x40 Steel st37 Shaft key 8x7x40 SS316	1	9.0060 9.0061
9	Rotor GGG50	1	1.0014
10	Vanes TECAPET	6	8.0005
11	Push rod Ø8 SS316	3	10.0035
12	Two-way outlet cover GS52-3	1	7.0204
13	Hex screw M12x30	17	9.0023
14	O-ring 85x79x3 FKM O-ring 85x79x3 FEP	2	4.0037 4.0038
15 <sup>2,3</sup>	Flange weld	2	6.0006
16	Flange Gasket Teflon Flange Gasket Rubber Cork	2	6.0010 6.0007
17	Support ring Steel st37	1	9.0339
18 <sup>1</sup>	Bearing cover (closed) GS52-3	1	7.0198
19	Hex screw M8x16	8	9.0005

## GSL2.5

No	DESCRIPTION	PIECES	CODE
20	Greaser M6	2	9.0045
21	By-Pass Valve GGG50 By-Pass Valve Brass By-Pass Valve SS316	1	3.0002 3.0001 3.0004
22	Spring C80 Spring SS316 Spring C80 Plated	1	22.0004 22.0011 22.0005
23	Allen screw M12x60 Allen screw M12x60 SS316	1	9.0032 9.0033
24	By-Pass Valve nut M22 Brass By-Pass Valve nut M22 SS316	1	3.0025 3.0027
25	By-Pass Valve cover GS52-3	1	7.0201
26	Spring guide Steel st37 Spring guide SS316	1	22.0008 22.0015
27	Pump body GS52-3	1	7.0189
28	Shaft single end 42CrMo4 Shaft single end SS316 Shaft double end 42CrMo4 Shaft double end SS316	1	10.0004 10.0006 10.0060 10.0062
29	Bearing cover (open) GS52-3	1	7.0195
30	Coupling Steel st37 Coupling SS316	1	10.0040 10.0042
31	Hex screw M8x30	16	9.0011
32	O-ring 168x162x3 FKM O-ring 168x162x3 FEP	2	4.0034 4.0035
33	Intermediate Washer 49x34x3 St37	1	9.0342
34	Locating pin Steel st37	4	9.0344

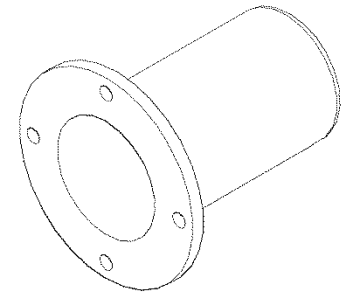
## GSL2

No	DESCRIPTION	PIECES	CODE
1	Rotary lip seal 28x45x7 NBR	2	4.0118
2	Shaft nut Steel st37	1	9.0332
3	Retaining ring Self Locking Steel st37	1	9.0335
4	Ball bearing 6206	2	5.0001
5 <sup>4,5</sup>	Mechanical seal 502 Mechanical seal 59U	2	4.0014 4.0017
6	Head GS52-3	2	7.0191
7	Disk Carbon	2	6.0053
8	Shaft key 8x7x40 Steel st37 Shaft key 8x7x40 SS316	1	9.0060 9.0061
9	Rotor GGG50	1	1.0013
10	Vanes TECAPET	6	8.0002
11	Push rod Ø8 SS316	3	10.0034
12	Two-way outlet cover GS52-3	1	7.0203
13	Hex screw M10x30	17	9.0015
14	O-ring 70x64x3 FKM O-ring 70x64x3 FEP	2	4.0031 4.0032
15 <sup>2,3</sup>	Flange weld	2	6.0001
16	Flange Gasket Teflon Flange Gasket Rubber Cork	2	6.0005 6.0002
17	Support ring Steel st37	1	9.0338
18 <sup>1</sup>	Bearing cover (closed) GS52-3	1	7.0197
19	Hex screw M8x16	8	9.0005

## GSL2

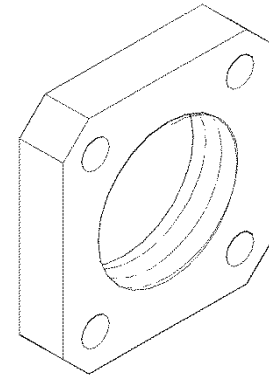
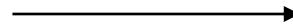
No	DESCRIPTION	PIECES	CODE
20	Greaser M6	2	9.0045
21	By-Pass Valve GGG50 By-Pass Valve Brass By-Pass Valve SS316	1	3.0002 3.0001 3.0004
22	Spring C80 Spring SS316 Spring C80 Plated	1	22.0004 22.0011 22.0005
23	Allen screw M12x60 Allen screw M12x60 SS316	1	9.0032 9.0033
24	By-Pass Valve nut M22 Brass By-Pass Valve nut M22 SS316	1	3.0025 3.0027
25	By-Pass Valve cover GS52-3	1	7.0200
26	Spring guide Steel st37 Spring guide SS316	1	22.0008 22.0015
27	Pump body GS52-3	1	7.0188
28	Shaft single end 42CrMo4 Shaft single end SS316 Shaft double end 42CrMo4 Shaft double end SS316	1	10.0001 10.0003 10.0057 10.0059
29	Bearing cover (open) GS52-3	1	7.0194
30	Coupling Steel st37 Coupling SS316	1	10.0037 10.0039
31	Hex screw M8x30	12	9.0011
32	O-ring 151x145x3 FKM O-ring 151x145x3 FEP	2	4.0028 4.0029
33	Intermediate Washer 40x29.3x3 St37	1	9.0341
34	Locating pin Steel st37	4	9.0344

No	DESCRIPTION	PIECES	CODE
35 <sup>1</sup>	Shaft cover (GSL3)	1	10.0068
	Shaft cover (GSL2.5)		10.0067
	Shaft cover (GSL2)		10.0066



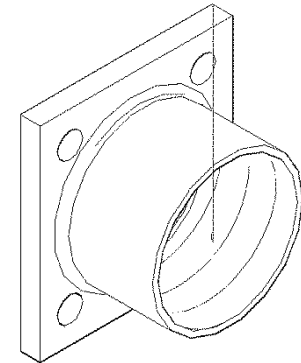
<sup>1</sup>For double end shaft model replace nr18part with shaft cover part nr35

No	DESCRIPTION	PIECES	CODE
36 <sup>2</sup>	Flange NPT (GSL3)	2	6.0040
	Flange NPT (GSL2.5)		6.0037
	Flange NPT (GSL2)		6.0034



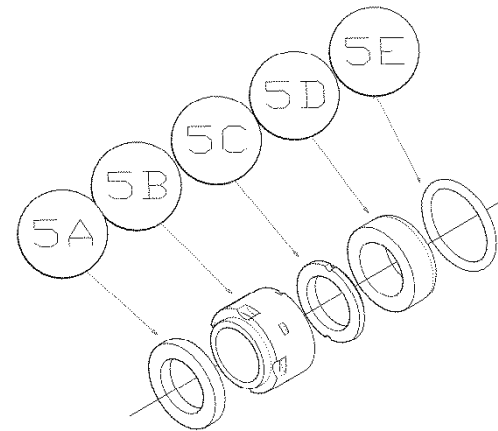
<sup>2</sup>For NPT flange connection replace nr15 part with NPT flange part nr36

No	DESCRIPTION	PIECES	CODE
37 <sup>3</sup>	Flange BSPP (GSL3)	2	6.0049
	Flange BSPP (GSL2.5)		6.0046
	Flange BSPP (GSL2)		6.0043

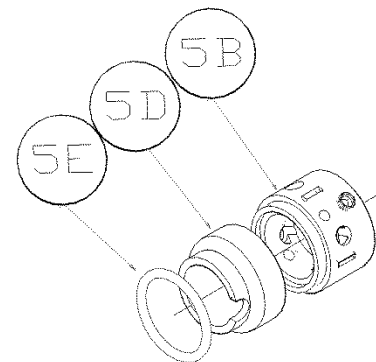


<sup>3</sup>For BSPP flange connection replace nr15 part with BSPP flange part nr37

No	DESCRIPTION	PIECES	CODE
5A	Intermediate washer	1	4.0064(59U) GSL3
5B	Secondary seal	1	4.0015(59U) GSL2.5
5C	Rotating ring	1	4.0014(59U) GSL2 4.0016(502) GSL3
5D	Stationary seat	1	4.0063(502) GSL2.5
5E	O-ring	1	4.0017(502) GSL2



<sup>4</sup>Type 502 mechanical seal EN 12756



<sup>5</sup>Type 59U mechanical seal EN 12756